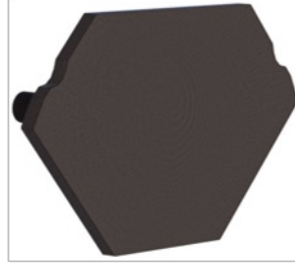


End cap for profile + cover S

Endcap SMALL corner profile 20.9/20.9 black

Radium

Product Datasheet Date: 02.04.2026



General Data

Code Radium	ZTPA4412
Désignation	ENDCAP PROFILE SMALL CORNER BLACK
EAN 10 (unité)	4003556012424
Unité de transport (pièces)	10
EAN 40 (carton)	4003556412422
Poids brut du carton en kg	0.01
Product weight	1 g
Product status	● Actif

Specification

Type of accessory/spare part	End piece
Length max.	6 mm
Height	20,9 mm
Width	20,9 mm
Material	Plastic
Product shape	W

Notes on Operation

Fitting aluminium profile	TRPA2531, TRPA2532, TRPA2533
Fitting Cover	ZTPA2571, ZTPA2581, ZTPA2572, ZTPA2582, ZTPA2573, ZTPA2583

Miscellaneous

Similar products	ZTPA2613, ZTPA2713, ZTPA4413
------------------	------------------------------

End cap for profile + cover S

Endcap SMALL corner profile 20.9/20.9 black

Radium

Notes

High-quality black plastic end cap for the aluminum profile SMALL CORNER

Please, refer to www.radium.de/recycling for notes on disposal of burned-out lamps as well as lamp breakage.

The "lifespan L70" described for LED lamps indicates the number of hours when the luminous flux has decreased to 70% of its initial value.

The optimal field 'info about service life' contains the frame conditions according to standards based on which the specific service life has been determined. So, for example, "12B50, 50Hz" means that the mean service life (B50) has been determined with a 12h switching cycle at mains (frequency 50Hz), "3B50, HF" is based on a 3h switching cycle at electronic control gear (high frequency).

Notices explicatives générales

The technical design data in accordance with DIN and IEC. The producer does not take any responsibility for damage to persons or property in case of unsuitable operation or handling of the product. Operating data and dimensions are valid within the usual tolerances. Related lamp types (different bases, mains voltages) may be available on request. Sale and delivery are effected in accordance with the Radium Terms of Delivery and Payment valid on the day of conclusion of contract. Packing units offer economical advantages to the purchase and logistic department. Please match your quantity volume accordingly. For orders of a minimum quantity (clefts) with a lamp model the amount lower than the volume of each packaging unit, we will invoice 10 % additional charge per lamp type. Technical changes and terms of delivery are reserved. Manipulation of any kind to packaging or product is not permissible as this will violate Radium brand rights. Furthermore, technical properties of the product can change to its disadvantage or even destruction. Therefore, Radium cannot be responsible for consequential damages.

® = Registered trademark

Subject to change without notice. Errors and omissions excepted.

All technical data without guarantee.