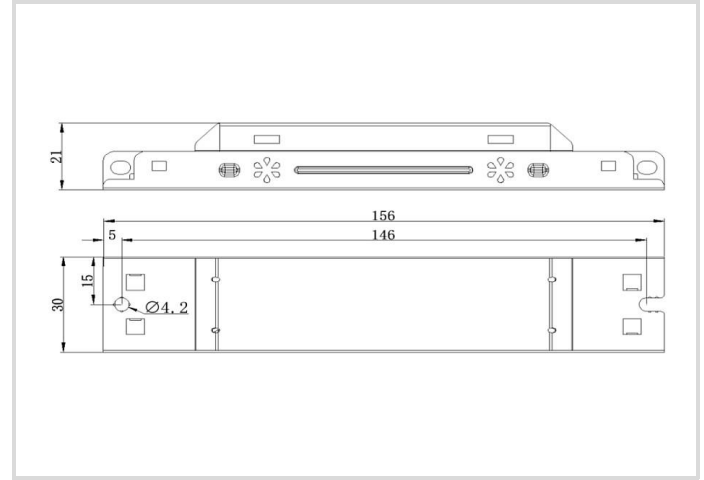
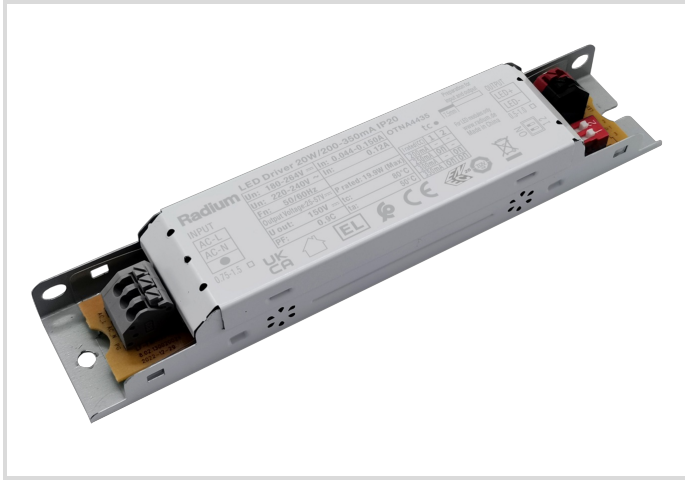


# Driver for DC-LED lamps and modules

DRIVER 20W/200-350mA IP20

# Radium

Product Datasheet Date: 02.04.2026



## General Data

Code Radium	OTNA4435
Désignation	DRIVER DC 20W/200-350mA IP20
EAN 10 (unité)	4003556012714
Unité de transport (pièces)	84
EAN 40 (carton)	4003556412712
Poids brut du carton en kg	8.48
Longueur box in m	0.39
Largeur du carton en m	0.29
Hauteur du carton en m	0.21
Product weight	90 g
Product status	● Actif

## Electric Parameters

Rated value output power max.	19.5 W
min. output power	5.0 W
Output power	5.0-19.5 W
Input voltage AC (range)	198-264 V
Input voltage DC (range)	180-264 V

# Driver for DC-LED lamps and modules

DRIVER 20W/200-350mA IP20

**Radium**

## Electric Parameters

Output voltage	25-57 V
Surge voltage resistance (L - N)	1.5 kV
Inrush current	19 A
Input current	0.15 A
Output current	200-350 mA
Suitable for DC-voltage (primary side)	Non
dimnable	Non
Dimming with push-button	Non

## Service Life

Service life	100000 h
Lifetime @Tc max.	50000 h
Tc Temperature max.	80 °C
Lifetime @Tc mean	70000 h
Lifetime @Tc low	100000 h
Guarantee	5 years

## Specification

Length	156 mm
Height max.	21 mm
Width	30 mm

## Notes on Operation

Degree of protection (IP)	IP20
Type of connection	spring clamp
Range of storage temperature	-30...+80 °C
Ambient temperatures	-30...+50 °C
Tc Temperature max.	80 °C
max. relative air humidity	95 %
Max. no. of Neo14/24	2
Max. no. of Neo 21/39	1

## Miscellaneous

Similar products	OTNA4436
------------------	----------

# Driver for DC-LED lamps and modules

DRIVER 20W/200-350mA IP20

**Radium**

## Notes

External constant current driver for installation in luminaire (e.g. for DC LED tubes), not dimmable, indoor use.

Please, refer to [www.radium.de/recycling](http://www.radium.de/recycling) for notes on disposal of burned-out lamps as well as lamp breakage.

The "lifespan L70" described for LED lamps indicates the number of hours when the luminous flux has decreased to 70% of its initial value.

The optimal field 'info about service life' contains the frame conditions according to standards based on which the specific service life has been determined. So, for example, "12B50, 50Hz" means that the mean service life (B50) has been determined with a 12h switching cycle at mains (frequency 50Hz), "3B50, HF" is based on a 3h switching cycle at electronic control gear (high frequency).

## Particularités



## Notices explicatives générales

The technical design data in accordance with DIN and IEC. The producer does not take any responsibility for damage to persons or property in case of unsuitable operation or handling of the product. Operating data and dimensions are valid within the usual tolerances. Related lamp types (different bases, mains voltages) may be available on request. Sale and delivery are effected in accordance with the Radium Terms of Delivery and Payment valid on the day of conclusion of contract. Packing units offer economical advantages to the purchase and logistic department. Please match your quantity volume accordingly. For orders of a minimum quantity (clefts) with a lamp model the amount lower than the volume of each packaging unit, we will invoice 10 % additional charge per lamp type. Technical changes and terms of delivery are reserved. Manipulation of any kind to packaging or product is not permissible as this will violate Radium brand rights. Furthermore, technical properties of the product can change to its disadvantage or even destruction. Therefore, Radium cannot be responsible for consequential damages.

® = Registered trademark

Subject to change without notice. Errors and omissions excepted.

**All technical data without guarantee.**