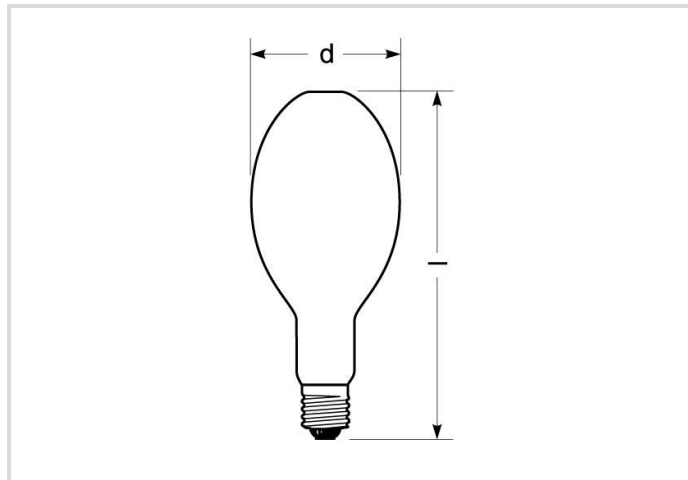


Metal halide lamp with quartz burner

HRI-E 400W/D/PRO/230/E40

Radium

Product Datasheet Date: 02.05.2026



G



34000



5200K



16 000h

General Data

Article No.	32419668
Code	HRI-E 400W/D/PRO/230/E40
Product EAN	4008597196683
Box quantity (pcs.)	12
EAN Box	4008597596681
Gross weight of box in kg	4.119
Length of box in m	0.541
Width of box in m	0.416
Height of box in m	0.317
Product weight	230 g
Product status	● Inactive

Electric Parameters

Wattage	430.0 W
Lamp nominal wattage	400 W
Weighted energy consumption in 1000 hours	430 kWh
Lamp voltage	115-115 V
Lamp voltage	115 V

Electric Parameters

Nominal choke current	4.6 A
Compensation capacitor for 50Hz operation	45 µF
dimnable	No

Light Application Parameters

Luminous flux	34000 lm
Rated lamp luminous flux	34000 lm
Efficacy	79 lm/W
Total mains efficacy	73 lm/W
Code of light color	952
Colour temperature	5200 K
Color coordinate X	0.340
Color coordinate Y	0,355
Colour rendering index CRI	90-100
Lumen maintenance at 2000h	0.92
Lumen maintenance at 4000h	0.90
Lumen maintenance at 6000h	0.87
Lumen maintenance at 8000h	0.85
Lumen maintenance at 12000h	0.81

Service Life

Average life	16000 h
Lamp survival factor at 2000h	0.96
Lamp survival factor at 4000h	0.94
Lamp survival factor at 6000h	0.93
Lamp survival factor at 8000h	0.88
Lamp survival factor at 12000h	0.81

Specification

Energylabel notice	current label, with EPREL registration
Energylabel (G -> A)	G
Diameter	120 mm
Length	290 mm
Total length max.	290 mm
Burning position	Random
Mercury content	73.5 mg

Metal halide lamp with quartz burner

HRI-E 400W/D/PRO/230/E40

Radium

Specification

Lamp shape	Ellipsoid
Model	Frosted
Base	E40
Colour	White

Notes on Operation

Burning position	Random
------------------	--------

Information especially for EPREL

Energylabel notice	current label, with EPREL registration
Lighting technology	MH
EPREL ID number	541431

Miscellaneous

Similar products	32417733, 32417734
------------------	--------------------

Notes

Metal halide lamp with quartz burner, elliptical bulb coated, daylight, base E40. Operation in enclosed luminaire, with ballast and ignitor.

Please, refer to www.radium.de/recycling for notes on disposal of burned-out lamps as well as lamp breakage.

The "lifespan L70" described for LED lamps indicates the number of hours when the luminous flux has decreased to 70% of its initial value.

The optimal field 'info about service life' contains the frame conditions according to standards based on which the specific service life has been determined. So, for example, "12B50, 50Hz" means that the mean service life (B50) has been determined with a 12h switching cycle at mains (frequency 50Hz), "3B50, HF" is based on a 3h switching cycle at electronic control gear (high frequency).

Base



E40
IEC/EN 60061-1
sheet 7004-24-6

Spectrum

Natural daylight is a mixture of direct sunlight and the light of the sky. Therefore, its spectral composition changes permanently due to the changing time of day. The standardised light classification D65 corresponds to a daylight with a colour temperature of approximately 6500 K.

Every discharge lamp type has got an individual spectral power distribution according to its chemical filling. From this result important properties light colour or colour rendering.

Should the spectral lines be very close together the lamp presumably has got a very good colour rendering index, so, Ra might be near 100. Does the spectrum rather look like single lines or frayed out the colour rendering of the lamp will probably be not as good.

If number and height of the spectral lines within the blue range (around 400 nm) prevails it might be a lamp with a rather cold light colour like for example daylight. On the other hand, should the red (around 700 nm) or the red and yellow (around 600 nm) range be dominant one can assume that the lamp will be a rather warm light colour like WDL.

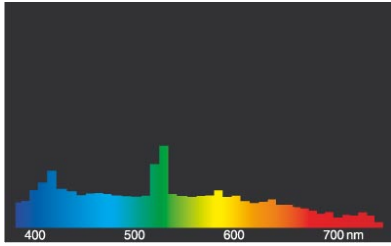
After the lamp start a metal halide lamp needs about 2-4 minutes time to reach its full luminous flux, all colours in the spectrum are within the discharge arc then.

Visible region from 380 to 780 nm; height of graph corresponding with relative spectral emission (400mW/klm) per 10nm.

Metal halide lamp with quartz burner

HRI-E 400W/D/PRO/230/E40

Radium

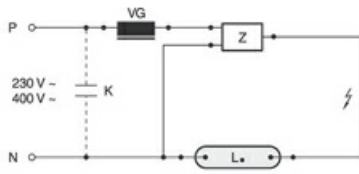


HRI.../D



daylight(D 65)

Circuit diagram(s)



Standardschaltung HID mit externem Zündgerät

Zeichenerklärung:

L. = Lampe

VG = Vorschaltgerät Konventionell (KVG/VMG)

P = Phase

N = Null-Leiter

K = Kompensations-Kondensator

Z = Zündgerät

Die notwendigen Geräte (hier Zünd- und Vorschaltgerät) zum Betrieb der Lampe sind normalerweise bereits in den dafür geeigneten Leuchten in der entsprechenden Schaltung installiert. Änderungen aller Art sind nur von qualifiziertem Fachpersonal durchzuführen. Dieses Schaltungsbeispiel ist daher lediglich als technische Hintergrund-Information für interessierte Anwender zu verstehen.

Special features



General notes

The technical design data in accordance with DIN and IEC. The producer does not take any responsibility for damage to persons or property in case of unsuitable operation or handling of the product. Operating data and dimensions are valid within the usual tolerances. Related lamp types (different bases, mains voltages) may be available on request. Sale and delivery are effected in accordance with the Radium Terms of Delivery and Payment valid on the day of conclusion of contract. Packing units offer economical advantages to the purchase and logistic department. Please match your quantity volume accordingly. For orders of a minimum quantity (clefs) with a lamp model the amount lower than the volume of each packaging unit, we will invoice 10 % additional charge per lamp type. Technical changes and terms of delivery are reserved. Manipulation of any kind to packaging or product is not permissible as this will violate Radium brand rights. Furthermore, technical properties of the product can change to its disadvantage or even destruction. Therefore, Radium cannot be responsible for consequential damages.

® = Registered trademark

Subject to change without notice. Errors and omissions excepted.

All technical data without guarantee.